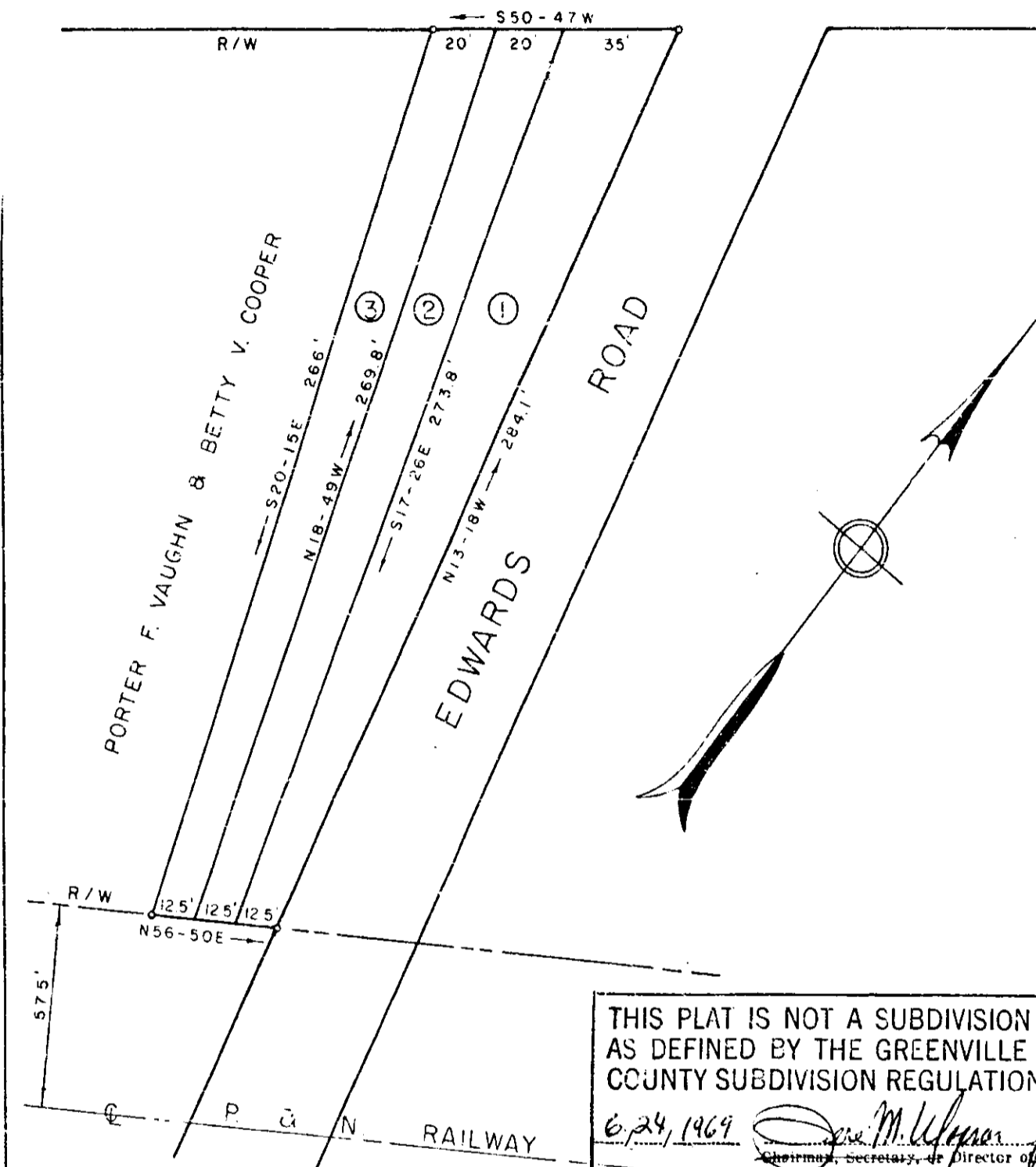


WADE HAMPTON BOULEVARD
(U. S. HIGHWAY NO. 29)



THIS PLAT IS NOT A SUBDIVISION
AS DEFINED BY THE GREENVILLE
COUNTY SUBDIVISION REGULATIONS.
6/24/1969
[Signature]
Chairman, Secretary, or Director of
Planning,
Greenville County Planning Commission

115 Filed This 7 day of July 1969
And Recorded in Vol. H.B. Page 139 at 2:57 P.M.
[Signature]
Register Meane Greenville County, S. C.

PROPERTY OF
MARSHALL MONTGOMERY

FILED
GREENVILLE CO. S. C.
JUL 9 9 57 AM '69
OLLIE FARNSWORTH
R. M. C.

GREENVILLE CO., S. C.
P7. T3. 6-1.1
Scale 1" = 40' June 1969

DALTON B NEVES, ENGINEERS
GREENVILLE, S. C.

4B-130
Iron Pins at all Corners 705 p. B 381

